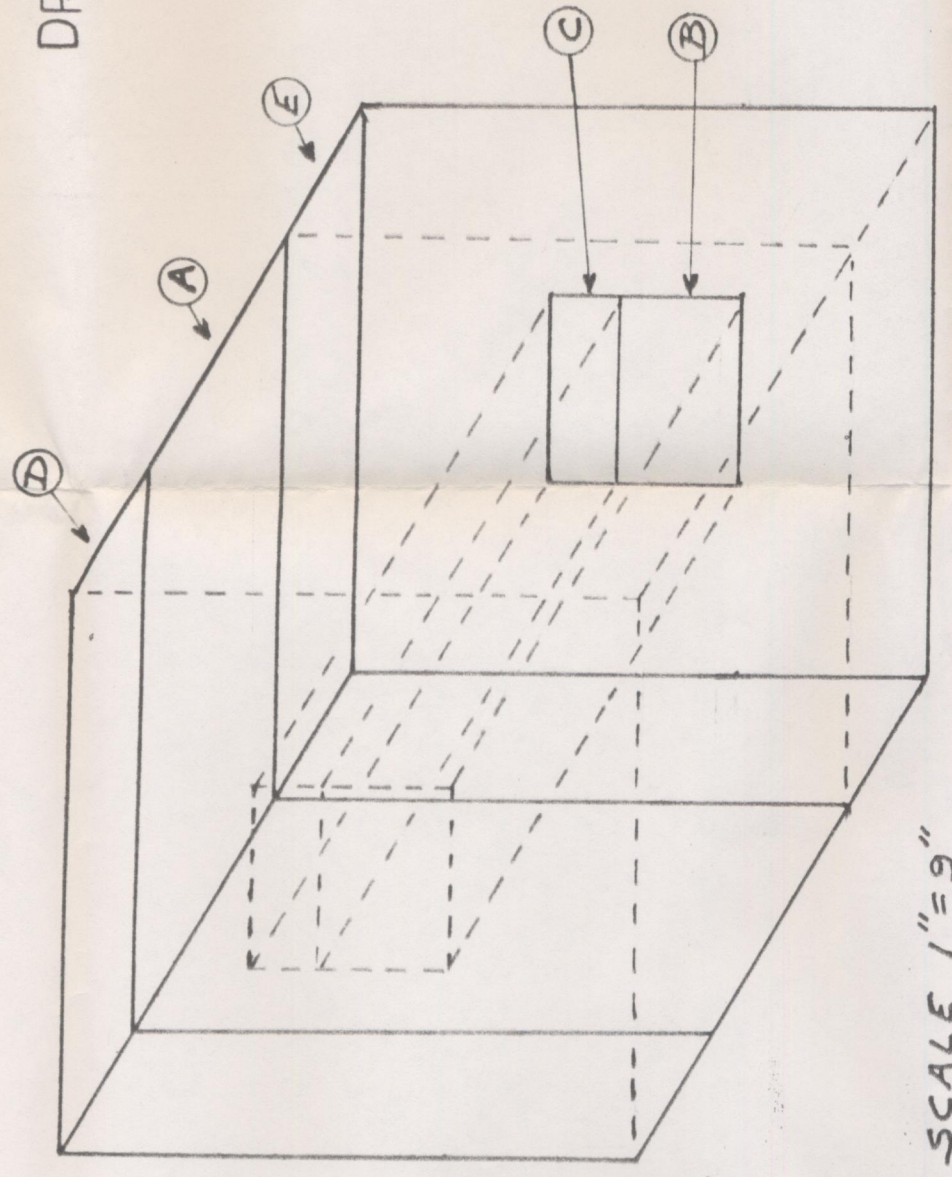


TO: Dr. H. Tracy Hall  
 1711 NORTH LAMBERT LAKE  
 PROVO, UTAH 84601  
 FROM: William A. Harshaw II  
 H-F ASSOCIATES, 6020 DEER RUN DRIVE  
 CHAGRIN FALLS, OHIO 44022

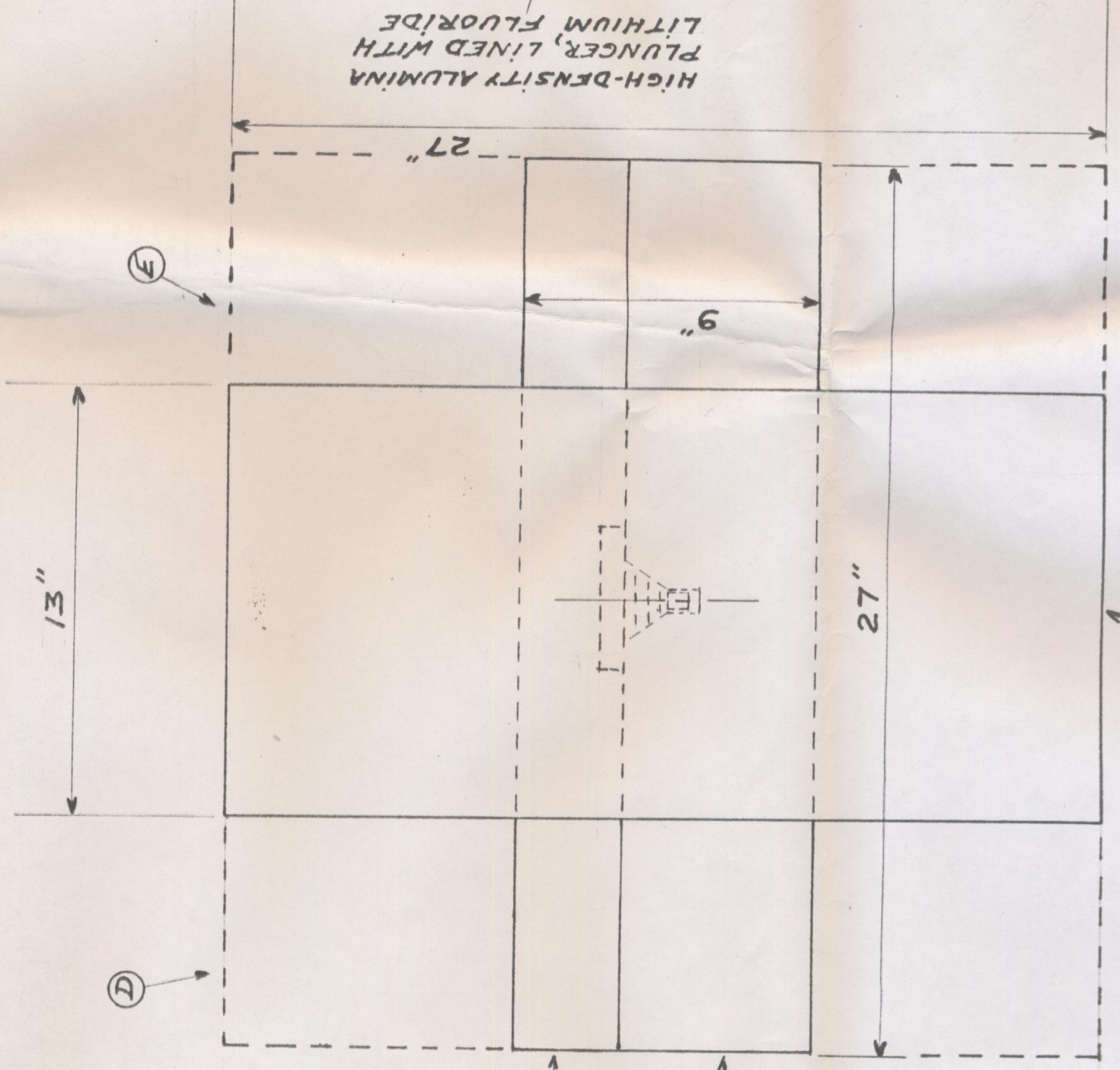
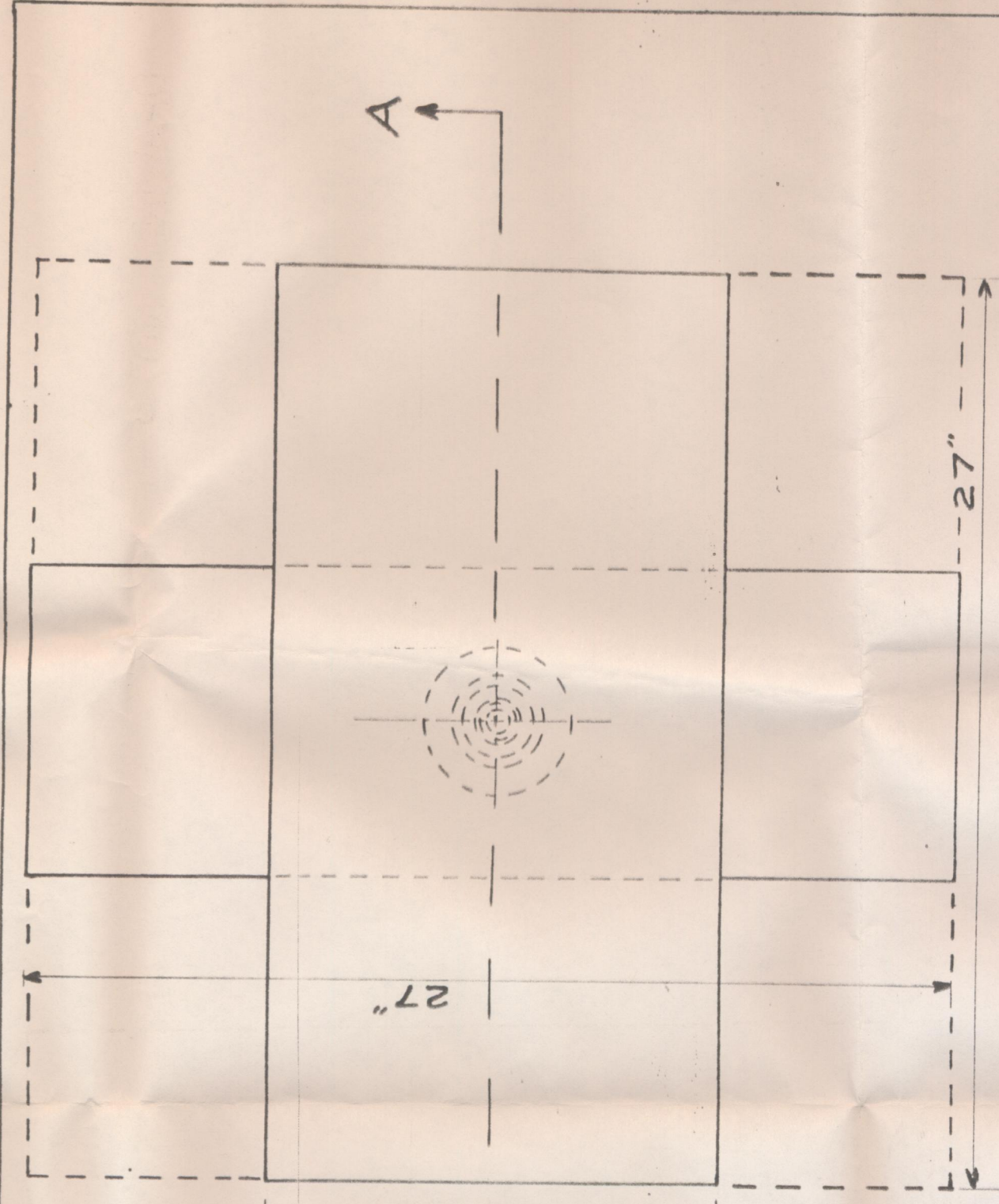
DRAWING NO. 2



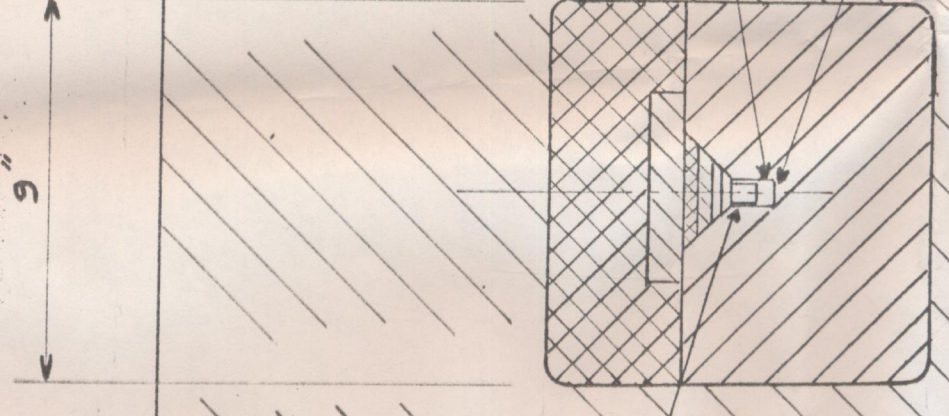
SCALE 1"=9"

REDUCED SCALE - ASSEMBLY

- NOTES:
1. D AND E OPTIONAL.
  2. AN ALTERNATE ARRANGEMENT HAS B AND C OF 13" LENGTH (THE THICKNESS OF A) WITH A YOKE SURROUNDING A AND CONTACTING BOTH ENDS OF B AND C.
  3. ANOTHER OPTION, WITH B AND C OF 13" AND A ON ITS SIDE, IS TO USE INDUSTRIAL HYDRAULIC PRESS - AGAINST THE ENDS OF B AND C.



HIGH-DENSITY ALUMINA  
 PLUNGER, LINED WITH  
 LITHIUM FLUORIDE



PROCESS  
 CHAMBER,  
 NICKEL-LINED

ELECTRICAL  
 HEATER -  
 CONNECTIONS  
 NOT SHOWN

SECTION A-A

HSF  
 10-17-75

PRESSURE APPARATUS ASSEMBLY

SCALE 1"=4 1/2"